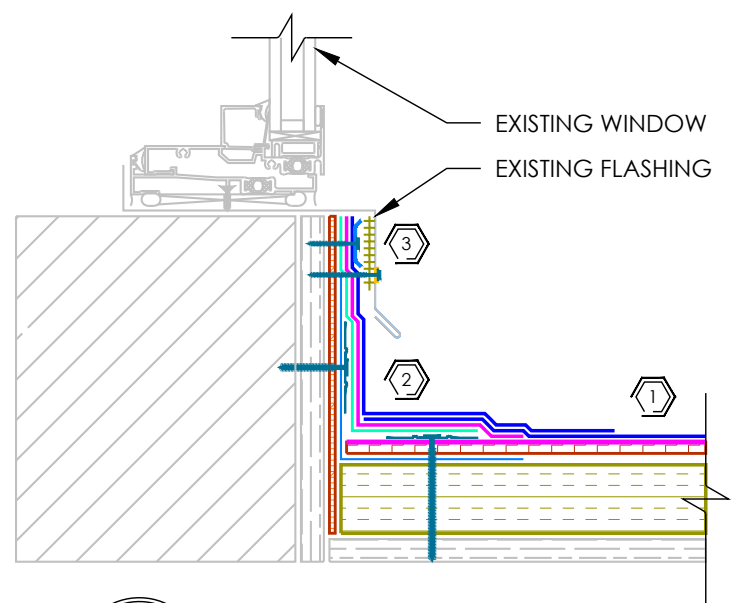
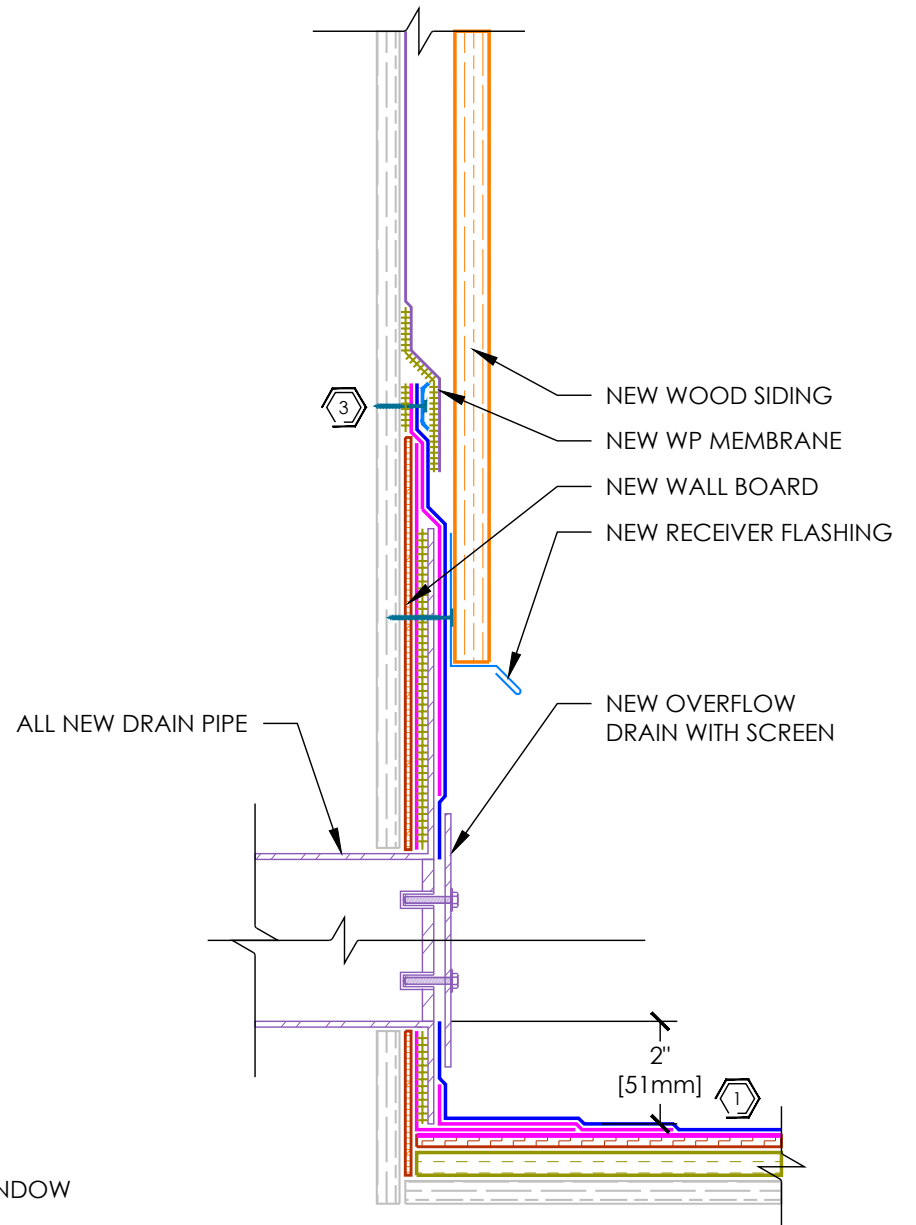


**1** DOOR  
NTS - OBSERVATION DECK



**2** WINDOW  
NTS - OBSERVATION DECK



**3** OVERFLOW DRAIN  
NTS - OBSERVATION DECK

**KEY NOTES**

1. REFER TO DETAIL 1 ON A 5.01 FOR ROOF COMPOSITION.
2. REFER TO DETAILS 2 & 3 ON A 5.01 FOR PERIMETER RESTRAINT & BASE TIE-IN DETAILS.
3. REFER TO DETAIL 3 ON A 5.01 FOR MEMBRANE TERMINATION.

RMIS ENGINEERING



389 MAXWELL CRESCENT  
Regina, SK S4N 5X9  
www.rmiseng.ca  
Phone 306.352.4606  
Fax 306.352.4607



LIVING PRAIRIE  
MUSEUM  
C.13.SK.35-18.03.03

2795 NESS AVENUE  
WINNIPEG, MB R3J 3S4

CITY OF WINNIPEG

4TH FLOOR - 135 KING STREET  
WINNIPEG, MB R3B 1J1

No.	DATE	DESCRIPTION

DESIGNED BY SMC 04/18/2018  
DRAWN BY SED 04/18/2018  
REVIEWED BY SMC 04/18/2018

DOOR, WINDOW &  
DRAIN DETAILS

**A 5.03**